

# Glass tanks: incorrect tortoise housing

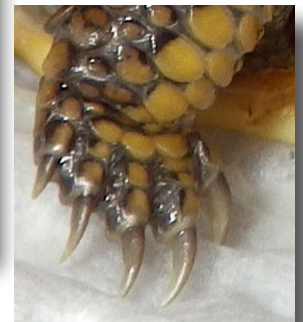


## Why are glass tanks bad?

- Little to no air circulation - acts as a sauna
- Cannot obtain or maintain correct temperatures
- Clear sides - stresses out the tortoise
  - Tortoises don't understand a glass barrier; if they can see through it, they will try to get through it

## What happens while living in glass:

- Abnormal development - many health problems and early death come from inadequate environmental conditions
- Stress and depression - tortoises are active, curious creatures and glass confinement results in abnormal behaviors:
  - Stress - constantly climbing the glass trying to get out
  - Depression - hiding or giving up, no activity
- Stress and depression are the causes of many significant and permanent health problems



*Above left: abnormal growth of the toes/claws from climbing glass walls for 20 years. Notice the claws are growing upward and sideways. This is very painful to the tortoise. Above right: correct growth from proper housing.*

## If glass is bad, why does the pet industry advocate its use?

- Money - the pet industry is focused on profit, not the well-being of animals
- Glass is easy to make, cheap and profitable



## Use correct housing for a happy and healthy tortoise!

Do your tortoise and yourself a favor and set them up correctly in an open-topped tortoise table, correct temperatures and a fresh-varied diet according to species requirements.

*Left: An example of an open-topped tortoise table set up for a basking species.*